



PRIMA
LIVING
PARK PLACE

Suite Plans

Studio

15055 Yonge St, Aurora, ON L4G 6T4 Canada
905-727-2952

Key Features Included:

- Three (3) meals included
- Weekly housekeeping
- Utilities
- Individual thermostat
- In-suite air-conditioning
- Kitchenette
- Cable TV
- Telephone
- Wi-Fi
- 24/7 staff
- On-call Nurse
- Emergency Response System
- Security system
- Secure entrance to the residence
- Laundry facilities
- Transportation services
- Pet friendly

Optional Services Available:

- In-suite meal delivery
- Daily housekeeping
- Daily room refresh
- Medication management
- Morning and evening assistance
- Showering and bathing assistance
- Additional care services available through our Care Assist program
- Personal laundry
- In-suite mail delivery
- Hair salon

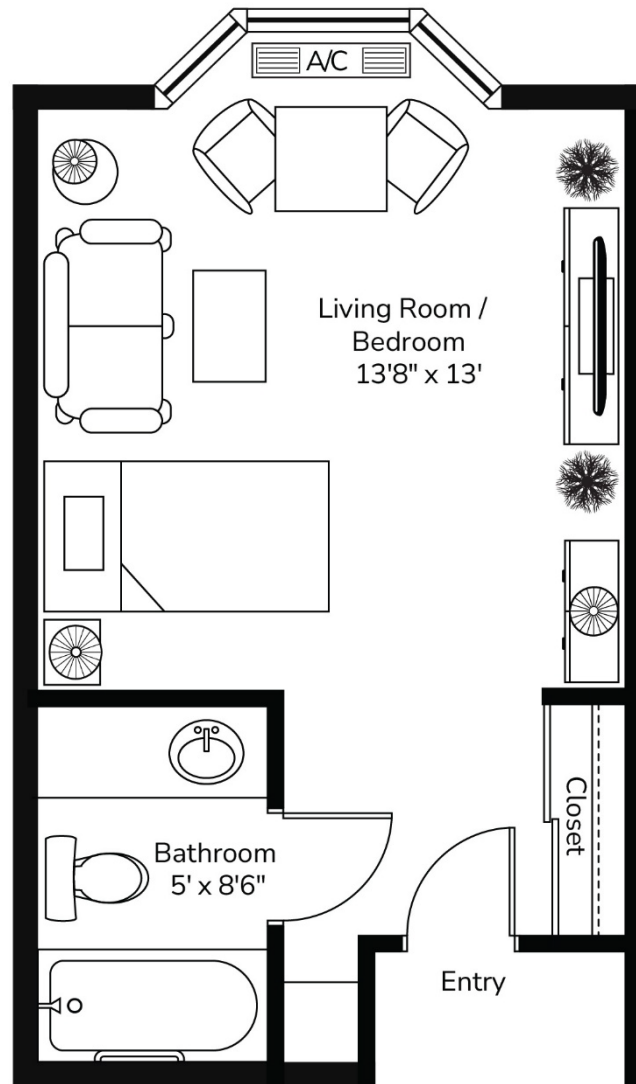
**All illustrations are artist's concept plans and specifications may change without notice. Actual usable floor space may vary from stated floor area. E & O.E.*



PRIMA
LIVING
PARK PLACE

The Highlander Studio

324 Sq.ft.



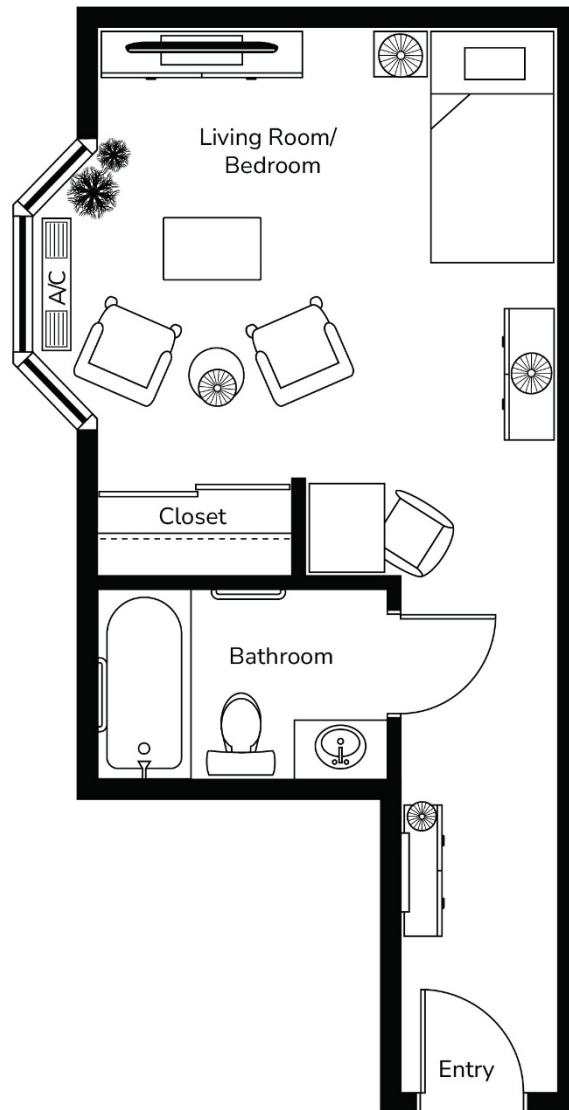
**All illustrations are artist's concept plans and specifications may change without notice. Actual usable floor space may vary from stated floor area. E & O.E.*



PRIMA
LIVING
PARK PLACE

The Simcoe Studio

331 Sq.ft.



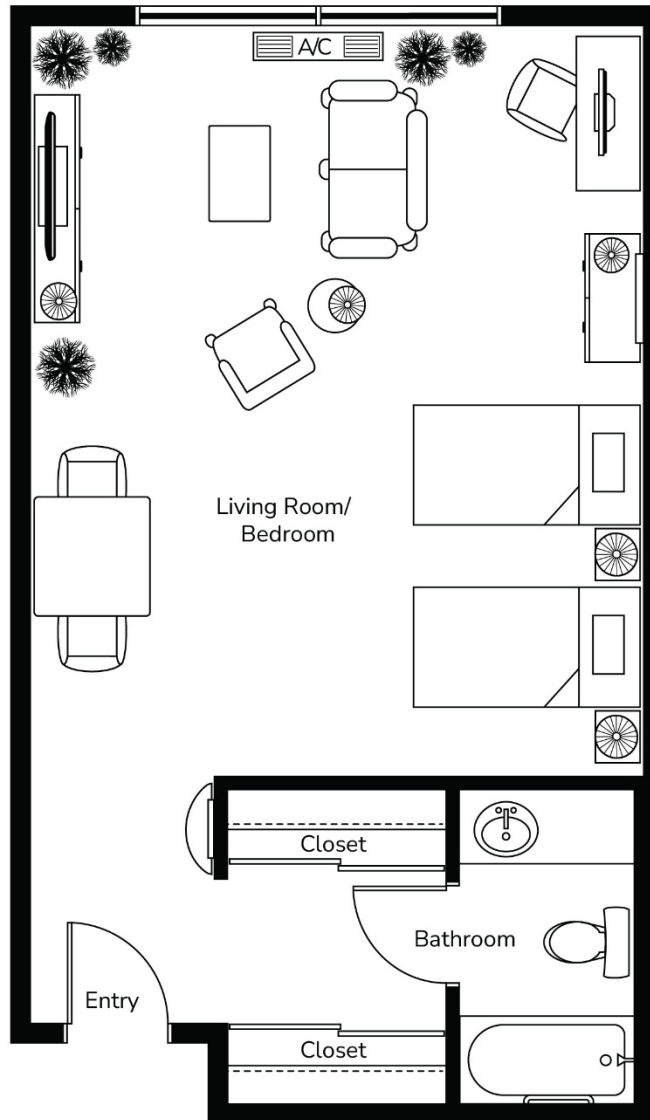
**All illustrations are artist's concept plans and specifications may change without notice. Actual usable floor space may vary from stated floor area. E & O.E.*



PRIMA
LIVING
PARK PLACE

The Wellington Studio

535 Sq.ft.



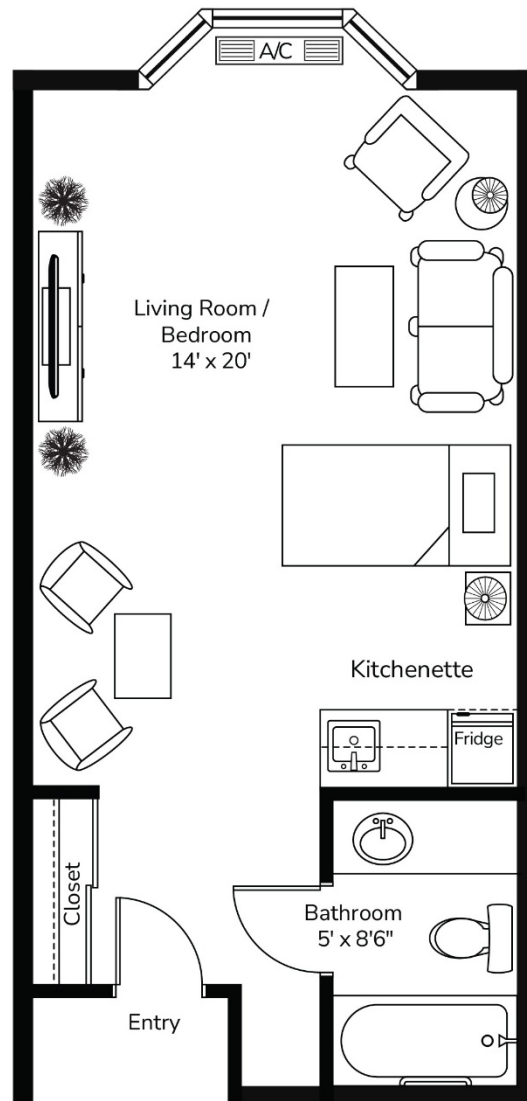
**All illustrations are artist's concept plans and specifications may change without notice. Actual usable floor space may vary from stated floor area. E & O.E.*



PRIMA
LIVING
PARK PLACE

The Victoria Studio

404 Sq.ft.



**All illustrations are artist's concept plans and specifications may change without notice. Actual usable floor space may vary from stated floor area. E & O.E.*



PRIMA
LIVING
PARK PLACE

Suite Plans

ONE BEDROOM

15055 Yonge St, Aurora, ON L4G 6T4 Canada
905-727-2952

Key Features Included:

- Three (3) meals included
- Weekly housekeeping
- Utilities
- Individual thermostat
- In-suite air-conditioning
- Kitchenette
- Cable TV
- Telephone
- Wi-Fi
- 24/7 staff
- On-call Nurse
- Emergency Response System
- Security system
- Secure entrance to the residence
- Laundry facilities
- Transportation services
- Pet friendly

Optional Services Available:

- In-suite meal delivery
- Daily housekeeping
- Daily room refresh
- Medication management
- Morning and evening assistance
- Showering and bathing assistance
- Additional care services available through our Care Assist program
- Personal laundry
- In-suite mail delivery
- Hair salon

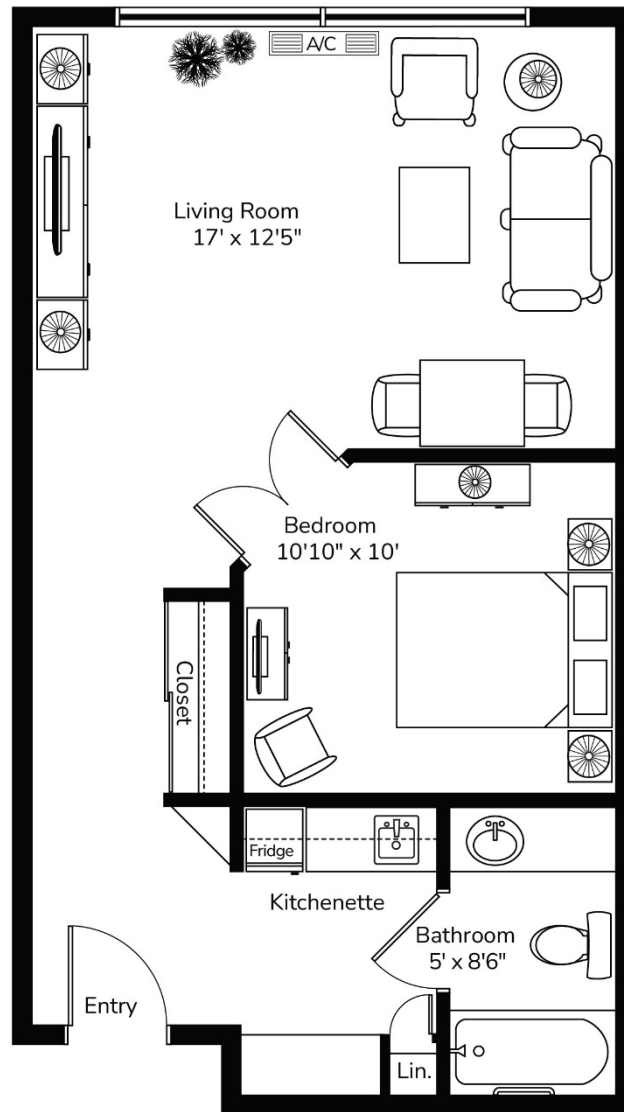
**All illustrations are artist's concept plans and specifications may change without notice. Actual usable floor space may vary from stated floor area. E & O.E.*



PRIMA
LIVING
PARK PLACE

The Aurora One Bedroom

535 Sq.ft.



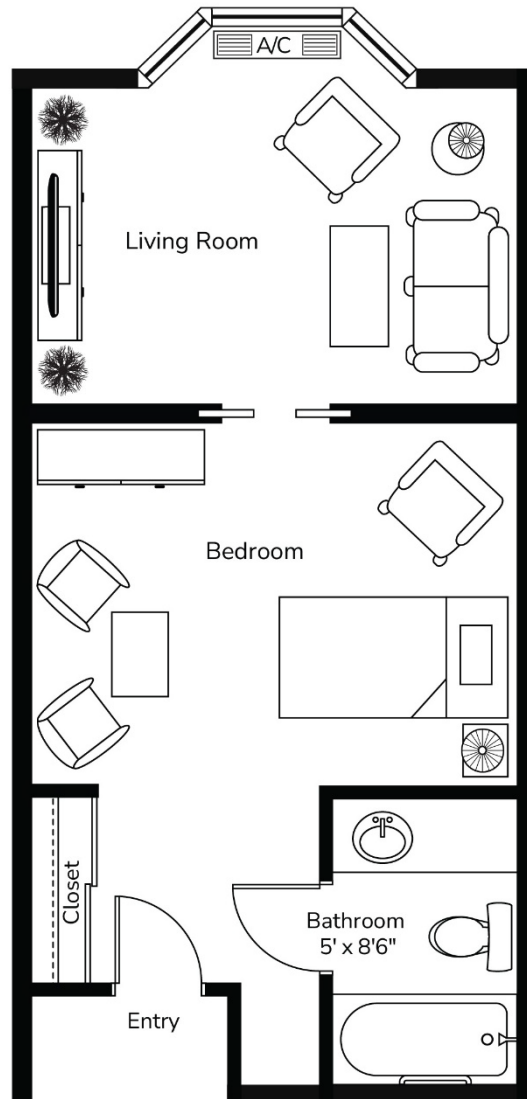
**All illustrations are artist's concept plans and specifications may change without notice. Actual usable floor space may vary from stated floor area. E & O.E.*



PRIMA
LIVING
PARK PLACE

The Victoria One Bedroom

404 Sq.ft.



**All illustrations are artist's concept plans and specifications may change without notice. Actual usable floor space may vary from stated floor area. E & O.E.*