



PRIMA  
LIVING  
PINEWOOD

# Suite Plans

## STUDIO

1022 Pembroke St E, Pembroke, ON K8A 8A7 Canada  
613-775-5007

### Key Features Included:

- Three (3) meals included
- Weekly housekeeping
- Utilities
- Individual thermostat
- Cable TV
- Wi-Fi common areas
- 24/7 staff
- On-call Nurse
- Emergency Response System
- Secure entrance to the residence
- Weekly linen service
- Outdoor parking
- Pet friendly

### Optional Services Available:

- Bi-weekly housekeeping
- Monthly housekeeping
- Daily housekeeping
- Daily room refresh
- Medication management
- Morning and evening assistance
- Showering and bathing assistance
- Additional care services available through our Care Assist program
- Bi-weekly linen service
- Monthly linen service
- Bi-monthly linen service
- Personal laundry
- Hair salon

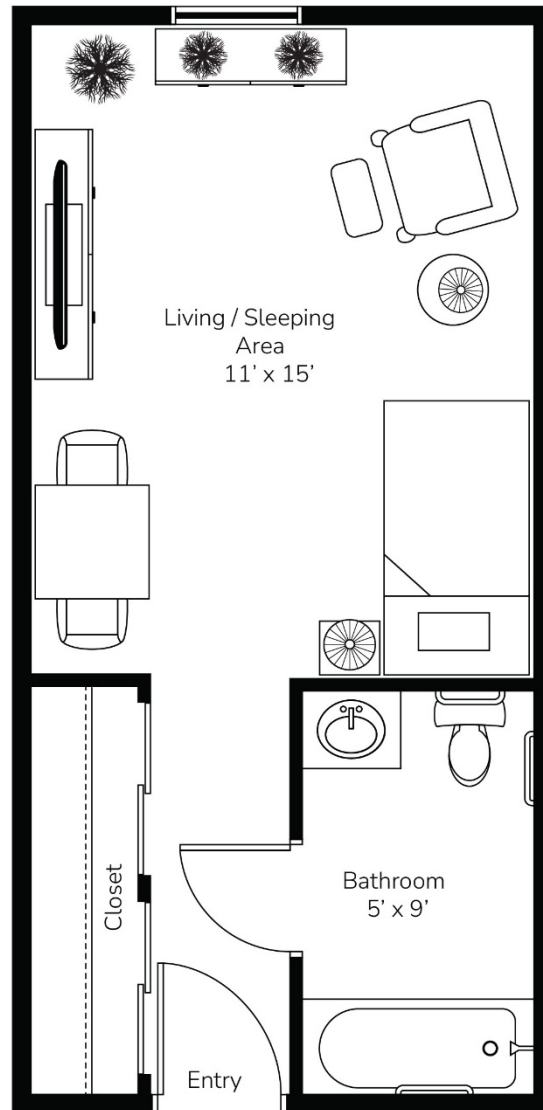
*\*All illustrations are artist's concept plans and specifications may change without notice. Actual usable floor space may vary from stated floor area. E & O.E.*



PRIMA  
LIVING  
PINEWOOD

# Private Suite Studio

264 Sq.ft.



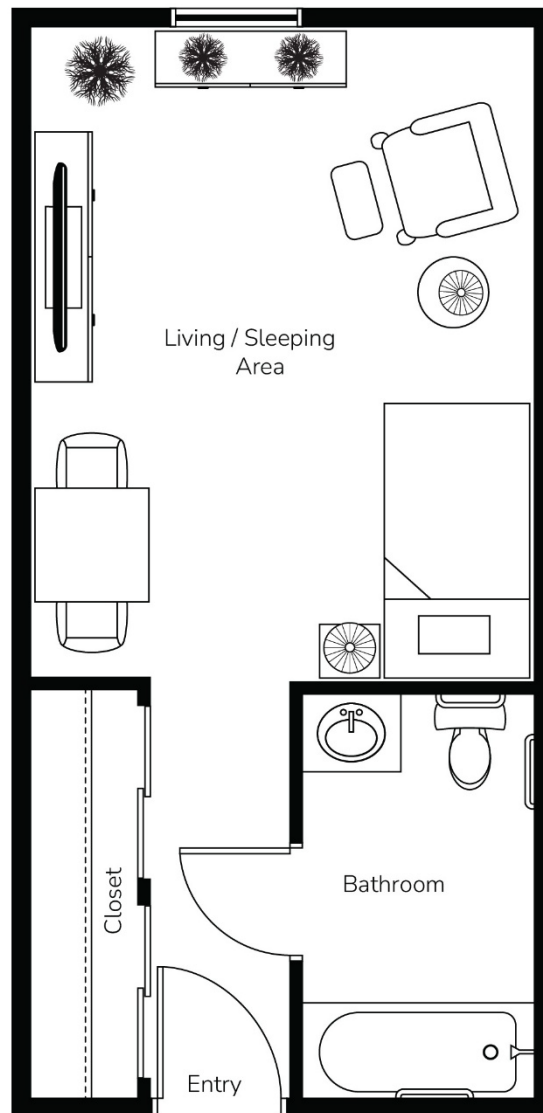
*\*All illustrations are artist's concept plans and specifications may change without notice. Actual usable floor space may vary from stated floor area. E & O.E.*



**PRIMA**  
LIVING  
—  
PINEWOOD

# Private Suite Studio

165 Sq.ft.



*\*All illustrations are artist's concept plans and specifications may change without notice. Actual usable floor space may vary from stated floor area. E & O.E.*



PRIMA  
LIVING  
PINEWOOD

# Suite Plans

## ONE BEDROOM

1022 Pembroke St E, Pembroke, ON K8A 8A7 Canada  
613-775-5007

### Key Features Included:

- Three (3) meals included
- Weekly housekeeping
- Utilities
- Individual thermostat
- Cable TV
- Wi-Fi common areas
- 24/7 staff
- On-call Nurse
- Emergency Response System
- Secure entrance to the residence
- Weekly linen service
- Outdoor parking
- Pet friendly

### Optional Services Available:

- Bi-weekly housekeeping
- Monthly housekeeping
- Daily housekeeping
- Daily room refresh
- Medication management
- Morning and evening assistance
- Showering and bathing assistance
- Additional care services available through our Care Assist program
- Bi-weekly linen service
- Monthly linen service
- Bi-monthly linen service
- Personal laundry
- Hair salon

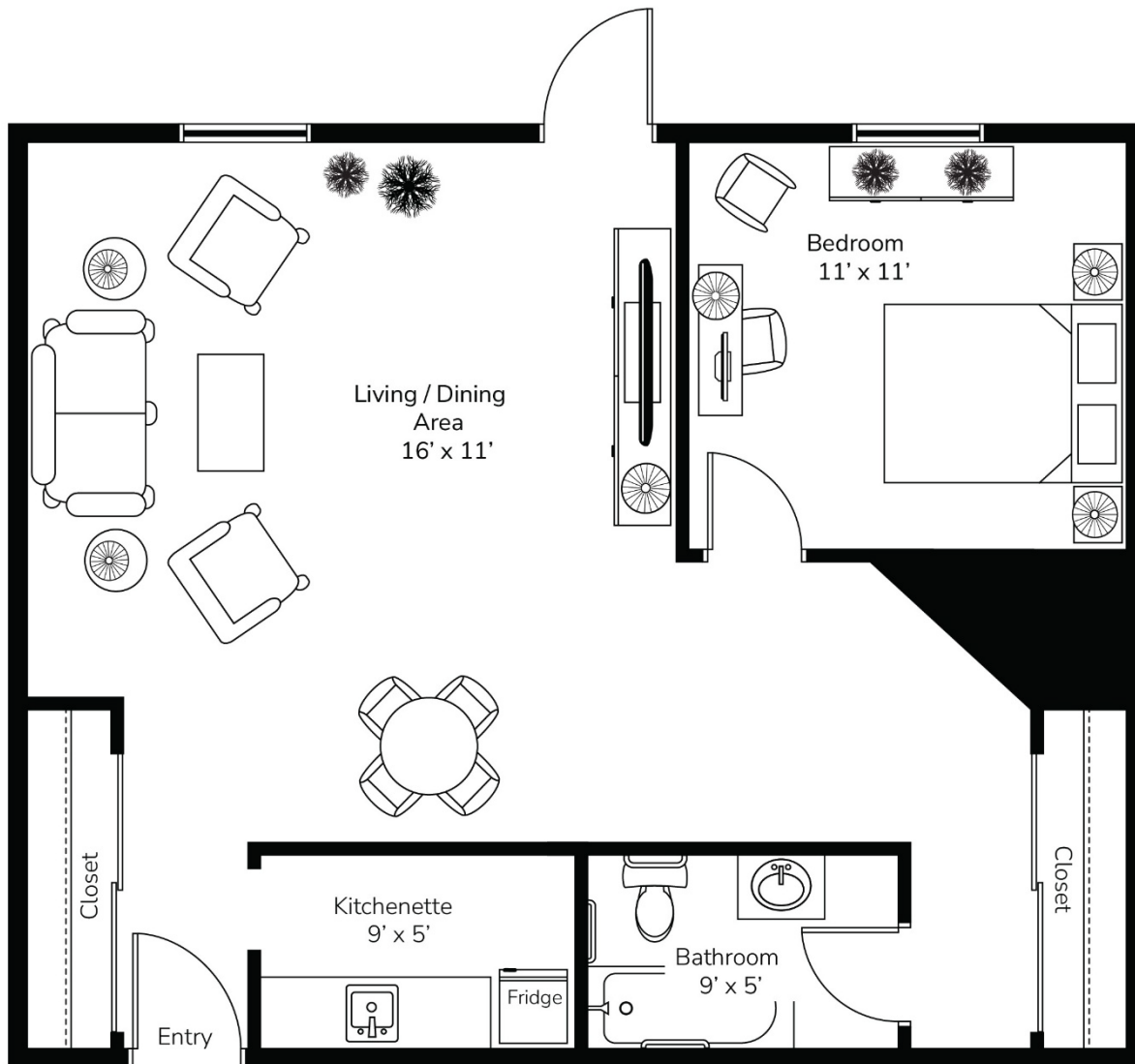
*\*All illustrations are artist's concept plans and specifications may change without notice. Actual usable floor space may vary from stated floor area. E & O.E.*



PRIMA  
LIVING  
—  
PINWOOD

# Luxury Suite One Bedroom

528 Sq.ft.



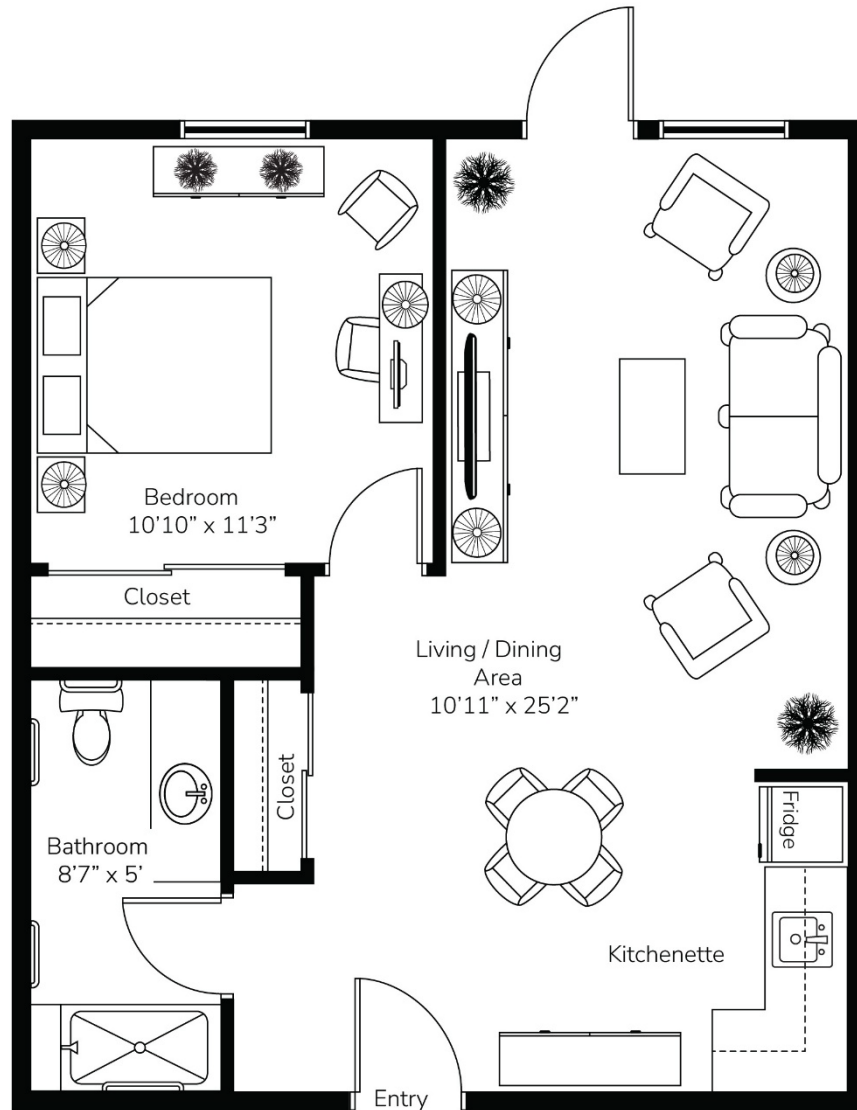
*\*All illustrations are artist's concept plans and specifications may change without notice. Actual usable floor space may vary from stated floor area. E & O.E.*



**PRIMA**  
LIVING  
—  
PINEWOOD

# Luxury Suite One Bedroom

498 Sq.ft.



*\*All illustrations are artist's concept plans and specifications may change without notice. Actual usable floor space may vary from stated floor area. E & O.E.*