



**PRIMA**  
LIVING  
ROSEDALE

# Suite Plans

## STUDIO

1813 County Road 2 East, RR 1, Brockville, Ontario K6V 5T1 Canada  
613-499-9983

### Key Features Included:

- Three (3) meals included
- Weekly housekeeping
- Utilities
- Individual thermostat
- Cable TV
- Wi-Fi common areas
- 24/7 staff
- Concierge
- On-call Nurse
- On-Site Nurse
- Emergency Response System
- Secure entrance to the residence
- Laundry facilities
- Weekly linen service
- Towel service
- Outdoor parking
- Transportation services
- Pet friendly
- Personal mailbox

### Optional Services Available:

- In-suite meal delivery
- Daily housekeeping
- Daily room refresh
- Medication management
- Morning and evening assistance
- Showering and bathing assistance
- Additional care services available through our Care Assist program
- Personal laundry
- Hair salon

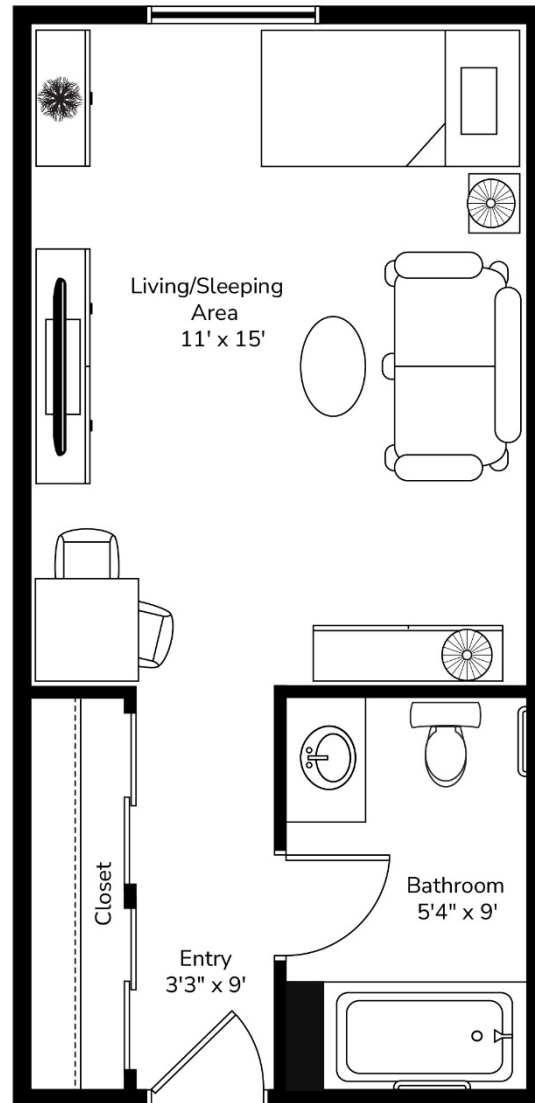
*\*All illustrations are artist's concept plans and specifications may change without notice. Actual usable floor space may vary from stated floor area. E & O.E.*



**PRIMA**  
LIVING  
ROSEDALE

# Private Studio Suites Units 1 – 61

242 Sq.ft.



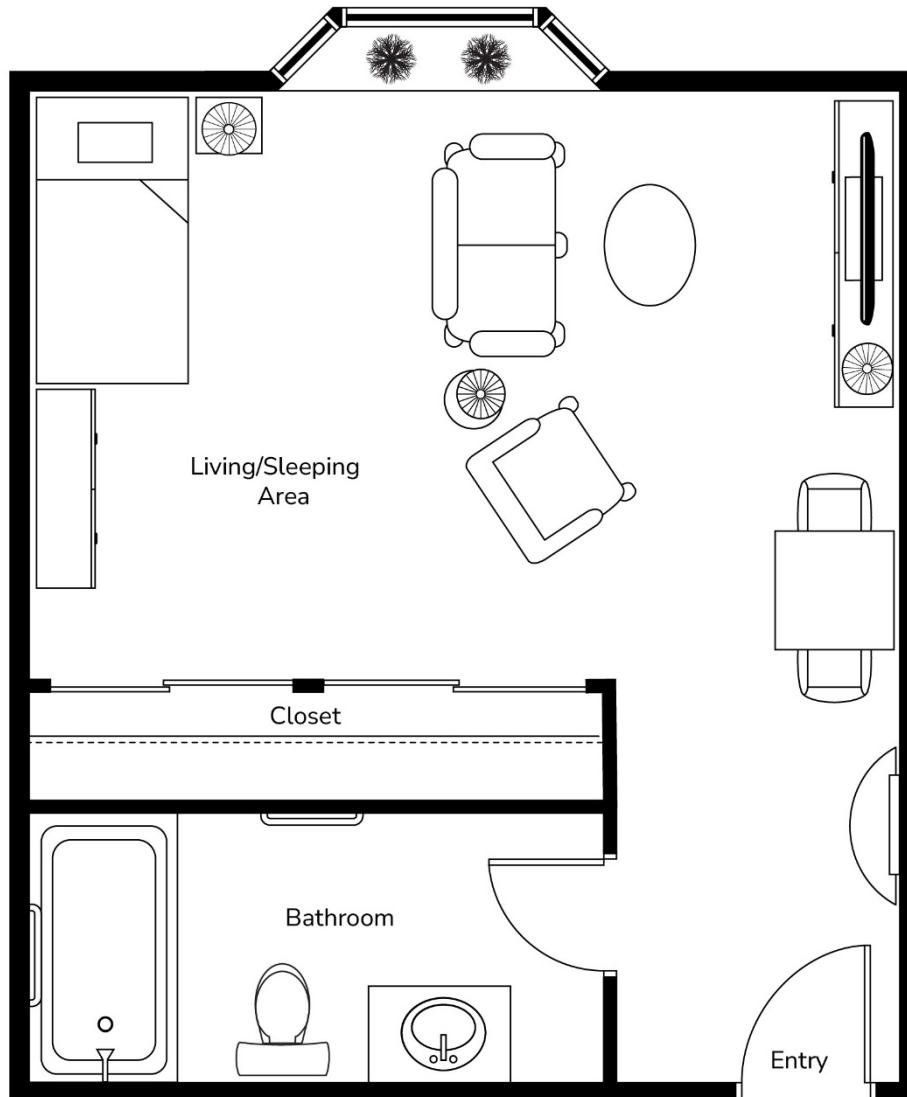
*\*All illustrations are artist's concept plans and specifications may change without notice. Actual usable floor space may vary from stated floor area. E & O.E.*



**PRIMA**  
LIVING  
ROSEDALE

## Deluxe Private Suites Units S1, S3, S5, S8

375 Sq.ft.



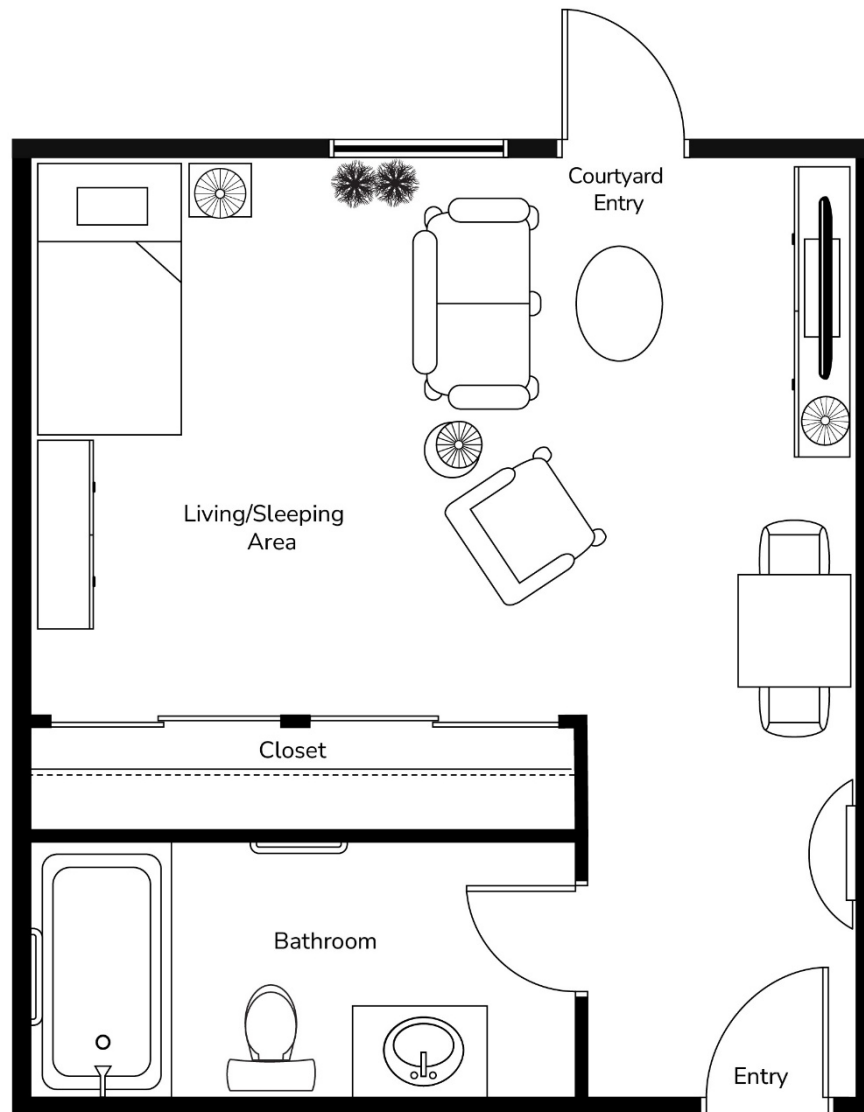
*\*All illustrations are artist's concept plans and specifications may change without notice. Actual usable floor space may vary from stated floor area. E & O.E.*



# Deluxe Private Suites Units S2, S4, S6, S9

PRIMA  
LIVING  
ROSEDALE

375 Sq.ft.



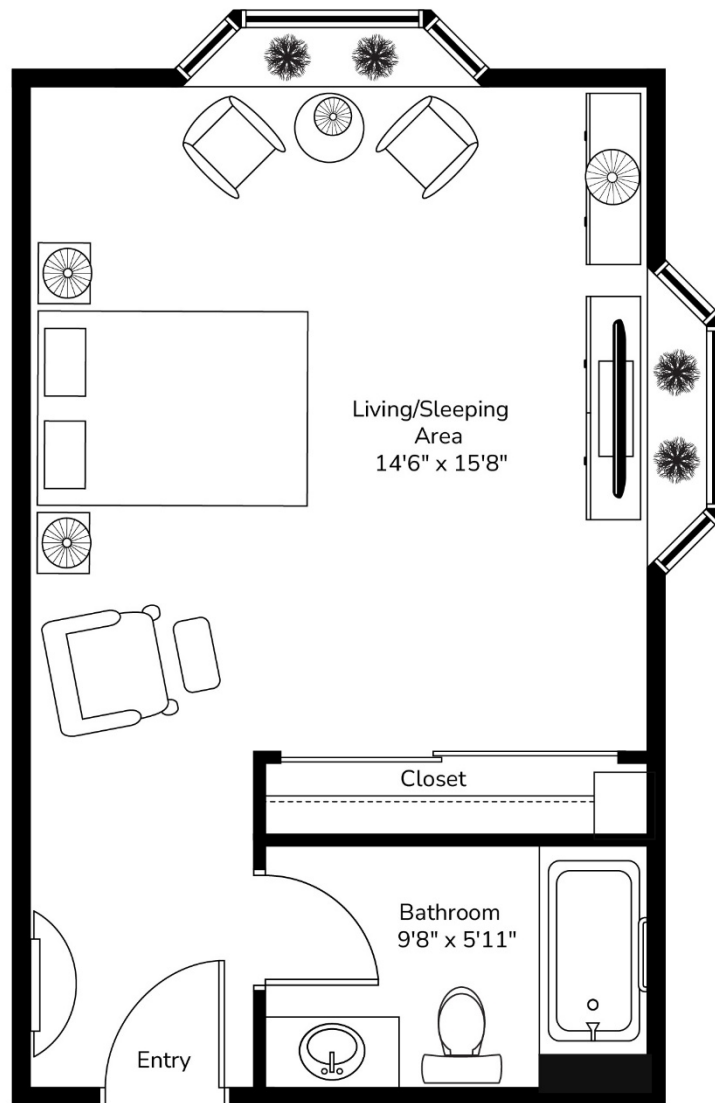
*\*All illustrations are artist's concept plans and specifications may change without notice. Actual usable floor space may vary from stated floor area. E & O.E.*



# Deluxe Private Suites Units S7, S10

PRIMA  
LIVING  
ROSEDALE

375 Sq.ft.



*\*All illustrations are artist's concept plans and specifications may change without notice. Actual usable floor space may vary from stated floor area. E & O.E.*



PRIMA  
LIVING  
ROSEDALE

# Suite Plans

## ONE BEDROOM

1813 County Road 2 East, RR 1, Brockville, Ontario K6V 5T1 Canada  
613-499-9983

### Key Features Included:

- Three (3) meals included
- Weekly housekeeping
- Utilities
- Individual thermostat
- Cable TV
- Wi-Fi common areas
- 24/7 staff
- Concierge
- On-call Nurse
- On-Site Nurse
- Emergency Response System
- Secure entrance to the residence
- Laundry facilities
- Weekly linen service
- Towel service
- Outdoor parking
- Transportation services
- Pet friendly
- Personal mailbox

### Optional Services Available:

- In-suite meal delivery
- Daily housekeeping
- Daily room refresh
- Kitchenette
- Medication management
- Morning and evening assistance
- Showering and bathing assistance
- Additional care services available through our Care Assist program
- Personal laundry
- Hair salon

*\*All illustrations are artist's concept plans and specifications may change without notice. Actual usable floor space may vary from stated floor area. E & O.E.*

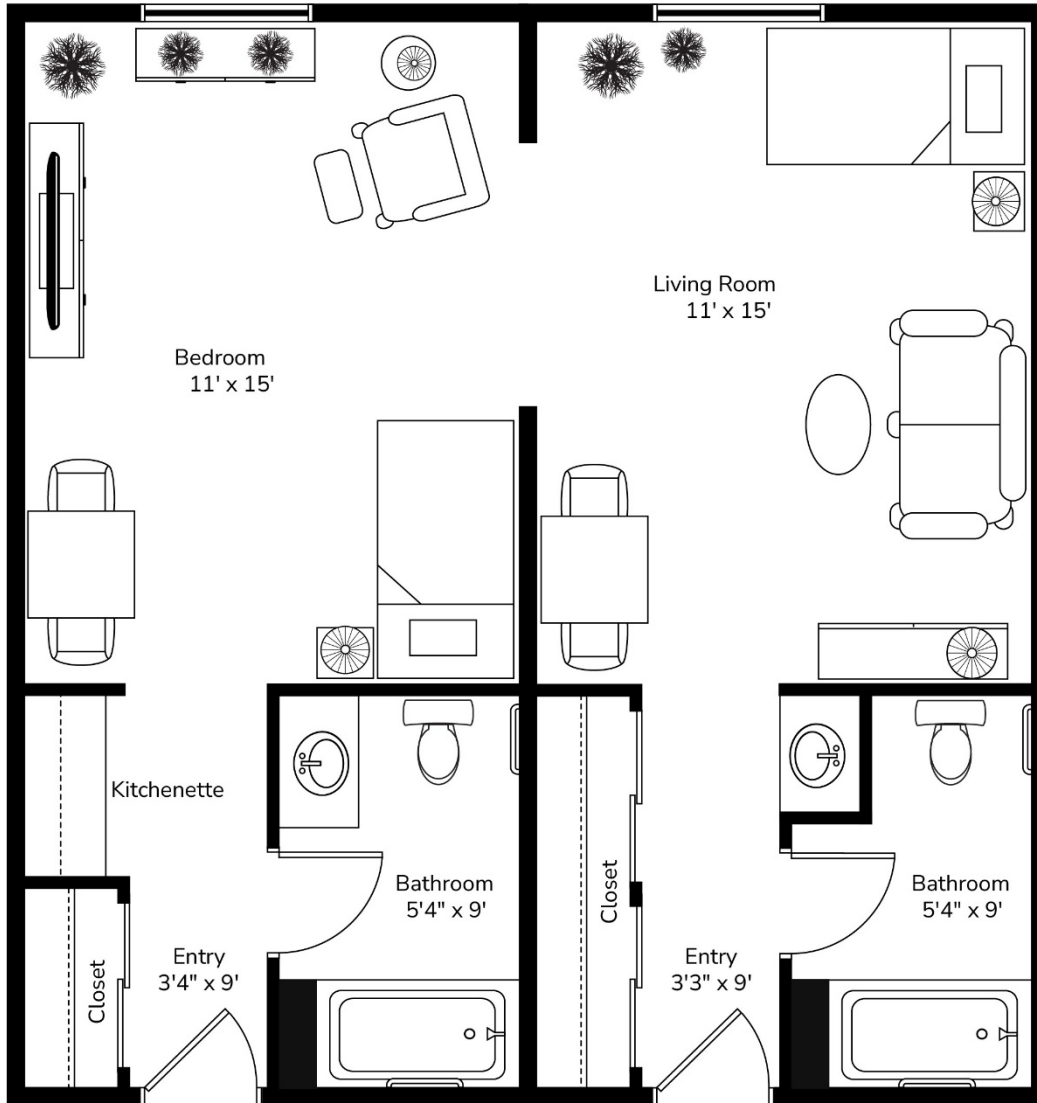


# One Bedroom Suites

## Units 7 – 8, 17 – 18, 24 – 25, 56 – 57

PRIMA  
LIVING  
ROSEDALE

484 Sq.ft.



\*All illustrations are artist's concept plans and specifications may change without notice. Actual usable floor space may vary from stated floor area. E & O.E.